



St. Philips Drive, Evesham, WR11 2RJ

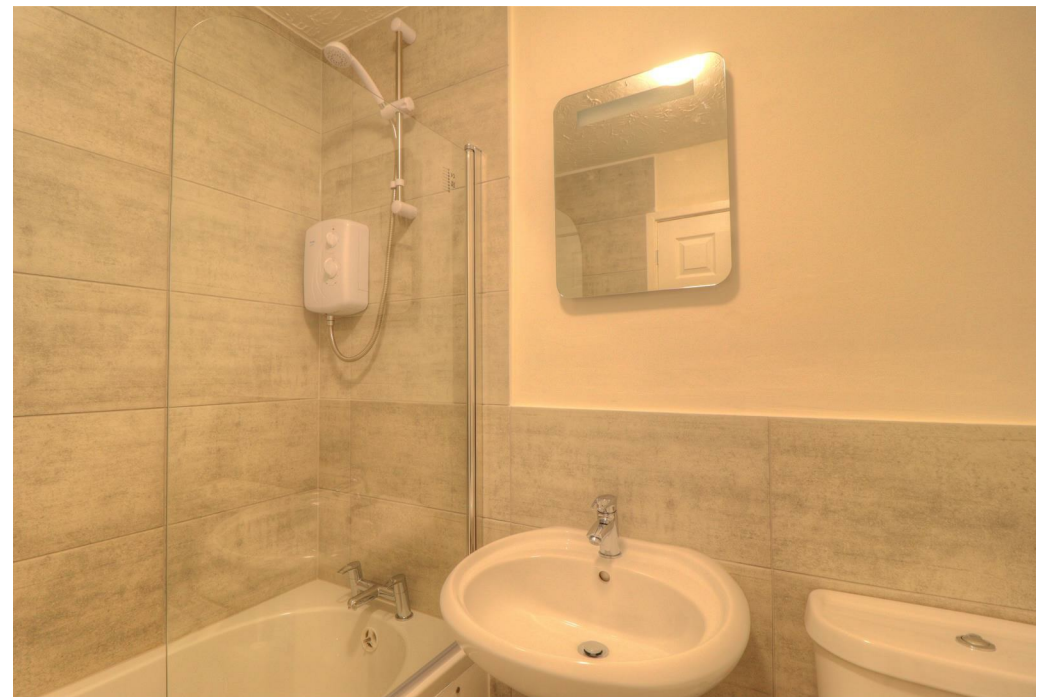
**SHELDON
BOSLEY
KNIGHT**

LAND AND
PROPERTY
PROFESSIONALS

Property Description

*** AVAILABLE JUNE *** A recently renovated ground floor one bedroom apartment on the outskirts of Evesham. Evesham is an historic market town with good road and rail links with a direct train line to London. The town offers a number of shops, cafes, bars and supermarkets with parks and gardens by the side of the River Avon. The accommodation briefly comprises, hallway, living room/kitchen including a range of kitchen units with spaces for appliances, bedroom with a built in wardrobe and bathroom with full suite including shower over bath. This property is offered unfurnished and comes with a parking space. Council Tax Band A. Energy Rating D. Initial 12 Month Tenancy. Standard, Superfast and Ultrafast Broadband types available.





Key Features

- AVAILABLE JUNE
- Evesham
- Unfurnished
- 1 Bedroom
- Ground Floor Apartment
- Recently Renovated
- Close to amenities
- Council Tax Band A
- Energy Rating D
- Initial 12 Month Tenancy

PCM
£750 PCM

EPC Rating - D

Tenure -

Council Tax Band - A

Local Authority -
Wychavon District Council